



## OWNER'S MANUAL

# Buddy 50

# Buddy 125 • 150 • 170

### Dear Customers:

Thank you for purchasing the Buddy from Genuine Scooter Company. The efficiency and longevity of each scooter will depend heavily on the operating method of each user. This owner's manual will provide you with operating instructions, precautions, and general maintenance information required to safely operate and maintain your scooter. Please read the entire manual before operating your scooter.

The Buddy comes in three different engine configurations. The Buddy 50 has a 2-stroke 50cc engine, the Buddy 125 has a 4-stroke 125cc engine, and the Buddy 150 has a 4-stroke 150cc engine and Buddy 170 has a 4-stroke 170cc EMS engine. Please be aware of your scooter's engine configuration while reading this manual.

If you have any questions, please ask your dealer for assistance.



## CONTENT

Scooter Safety.....3	Important Notes for Operation & Riding.....26
Limited warranty for GENUINE SCOOTERS.....4	Starting the Engine.....26
Part Location.....6	Warming up the Engine.....27
Identification.....9	Engine Break-in.....28
Switches & Controls.....11	Periodic Maintenance.....29
Speedometer.....12	Periodic Maintenance Table.....29
Handlebar Controls.....15	The Air Cleaner.....31
Steering Lock.....16	The Spark Plug.....32
Seat Lock.....16	Brake Adjustment.....33
Fuel Tank Cap.....17	Rear Brake Check.....33
Kick Start Lever.....17	Front Brake Check.....33
Luggage Compartment.....18	Brake Fluid Check.....33
Pre-ride Inspection.....19	Front Fork Check.....34
Rear Brake.....20	Fuel draining device.....35
Front Brake.....20	EMS quick diagnostic.....36
Brake Fluid.....21	Fuse Replacement.....38
Throttle Grip.....22	Battery.....38
Engine Oil.....22	Specification.....39
Air Cleaner.....23	Periodic Maintenance Record.....42
Tire.....24	Reporting Safety Defects.....43
Catalytic Converter.....25	

2



### GENUINE Warranty Card

Name		Telephone	
Address			
Model	Displacement C.C	Engine NO. ®	Vin NO.

Customer Signature

Dealer Signature

3

## Scooter Safety

### ▲ Warning

Scooter riding requires special effort on your part to ensure your safety. Know these requirements before you ride:

### Safe Riding Rules

1. Always make a pre-ride inspection (page ) and perform any needed adjustments or repairs before you ride the scooter.
2. Many accidents involve inexperienced riders. Many states require a special scooter riding test or license. Make sure you are qualified before you ride. NEVER lend your scooter to an inexperienced rider.
3. Many automobile/scooter accidents happen because the automobile driver does not see the motorcyclist. Make yourself conspicuous to help avoid accidents.
  - Wear bright or reflective clothing.
  - Don't ride in another motorist's blind spot.
4. Obey all national and local laws and regulations.
  - Excessive speed is a factor in many accidents. Obey speed limits, and NEVER travel faster than conditions safely allow.
  - Signal before you make a turn or lane change. Your size and maneuverability can surprise other motorists.
5. Don't let other motorists surprise you. Use extra caution at intersections, in parking lots, and driveways.
6. Keep both hands on the handlebars and both feet on the floorboards while riding. A passenger should hold on to the scooter and place feet on the passenger foot pegs.
7. Never leave scooter unattended with the engine running.
8. Moderate your speed when riding on bumpy roads. Avoid road hazards such as bumps and potholes in the road surface. These hazards can cause loss of control and/or structural damage to the vehicle.

4

## ■ LIMITED WARRANTY FOR GENUINE SCOOTERS

This is to be presented by the authorized GENUINE dealer to the purchaser of GENUINE scooters. We provide the following services:

### 1. TO OBTAIN THE WARRANTY SERVICE

- A. Effectiveness of the warranty
  - a. After completing the warranty card, the GENUINE selling dealer will give you the warranty card.
  - b. Please bring your scooter back to the original dealer for initial maintenance within 30 days after purchase, then the warranty is effective.
- B. Warranty period

※For the detail warranty condition, please check with your dealer.

### 2. PROCEDURE OF THE WARRANTY

- A. The customer must maintain scooter periodically according to GENUINE user's book and keep the complete maintenance record.
- B. The dealer shall check the warranty card, periodically maintenance record, license card for the customer.
- C. Only the GENUINE authorized dealer can accept the warranty application.

### 3. THINGS NOT COVERED IN THIS WARRANTY

- A. Any of the followings are not covered:
  - Defects caused by inappropriate maintaining or any artificial damages.

5

- Any accidents caused by natural disasters or out of human's control.
- Did not use fuel or spare parts provided or recommended by the GENUINE, or made any modification of the scooter.
- Scooters used for competition, performance or rental vehicle.
- Any re-assembling or dismantling of scooters which violates the rules of GENUINE service manual.
- Defects caused by unlicensed rider.
- Improper storage or transport.
- Not following the riding rules of Government or GENUINE Manual Guide.

**B. The following expenses are not covered:**

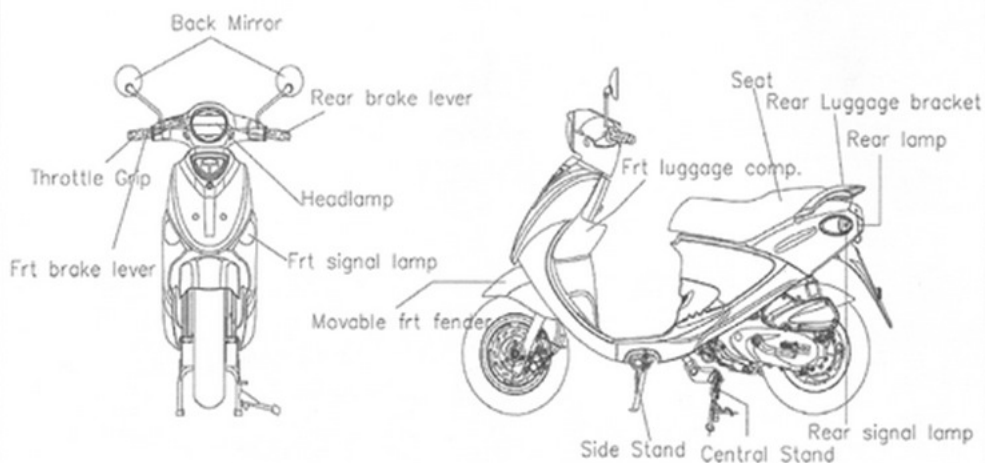
- (1) Consumable goods (including battery, bulbs, rubbers, cables, screws, piston rings, spark plugs, gaskets, brake pads, brake linings, clutch lining, springs, V-belt, CVT-rollers, fuses, air filter elements, oil filter, fuel filter)
- (2) Material of periodic maintenance and inspection, such as fuel, lubricant and fluid.
- (3) Any costs caused by the break down of the scooter. (including telephone bill, travel fee, transportation fee, rental fee, fines)

**4. INTERRUPTION OF THE WARRANTY PERIOD**

The user should send the scooter to repair immediately after the defects are found. If the defect worsens due to the delay of the repair, the GENUINE will not be responsible for the damage.

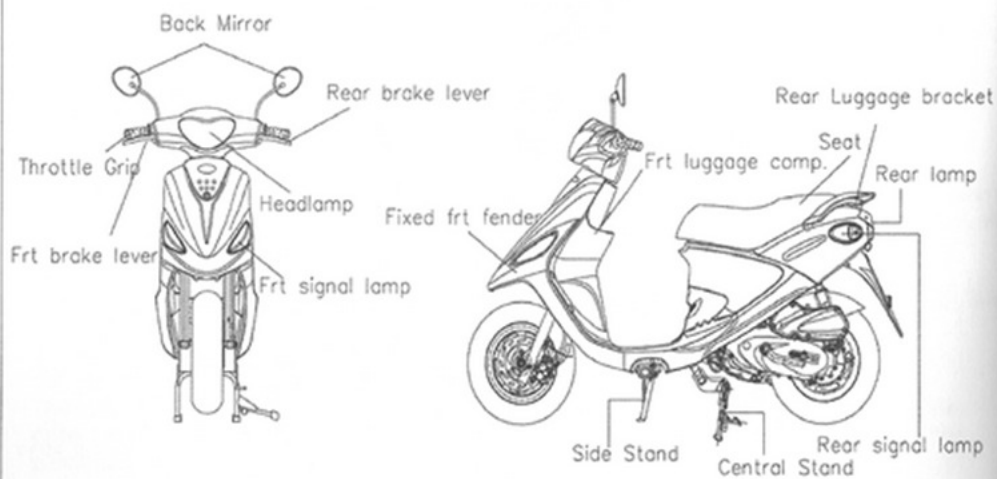
IF THERE IS A MAJOR CHANGE IN THE WARRANTY COVERAGE, THE GENUINE WILL MAKE OFFICIAL ANNOUNCEMENT TO ALL DEALERS AND WILL NOT

Parts Name for Movable Model



Remarks : The equipments depend on the actual vehicle.

## Parts Name for Fixed Model

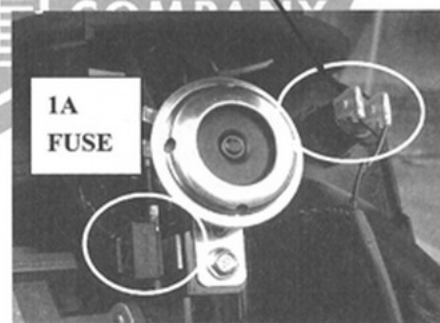
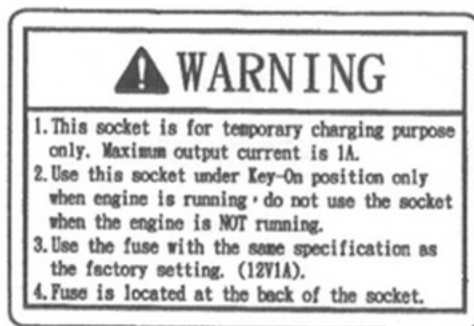
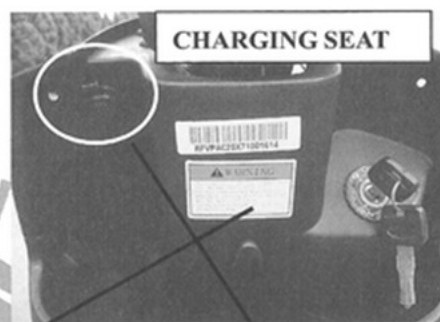


Remarks : The equipments depend on the actual vehicle.

8

### CAUTION:

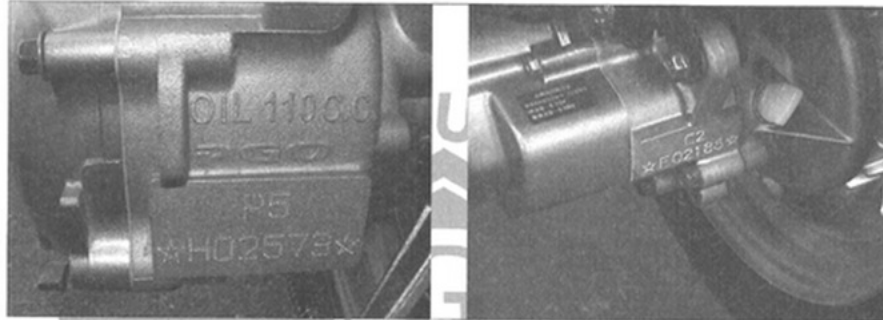
1. Buddy is equipped with cell phone charging seat, as right figure shown:
2. Before using it, please read the warning labels first and obey it.
3. The fuse (1A) is located inside the Windshield as shown.



9

## Identification

1. Engine Number is located (stamped) on the rear side of the left crankcase.



50 CC

100 / 125 / 150 / 170 CC

### NOTE:

1. The first two digits designate model type, the others are production serial numbers. Your dealer may need this number for ordering replacement parts. Please write down the Engine Number for reference.

10

2. Vehicle Identification Number (VIN) is located (stamped) inside the inner front cover.



### NOTE:

The first nine digits are model type, the last eight digits are production serial numbers. Your dealer may need this number for ordering replacement parts. Please write down the VIN for reference.

11

## Switches and Controls

1. Main Switch The main switch controls the ignition and lighting system.



The power is connected, engine can be started. Headlight is on. Tail light is on. The key cannot be pulled out from this position.



All the power is cut off. The key can be pulled out from this position.



All the power is cut off, and the handlebar is locked in this position.

To open seat, PUSH THE KEY AND TURN COUNTERCLOCKWISE. Seat can be opened no matter which position the key is set. "ON" (ON) or "OFF" (OFF) or "LOCKED" position.



12

## 2. Gauges & Indicators

### 1. Signal Indicator (Green)

When the blinker switch is shifted, this indicator will flash.

### 2. High Beam Indicator (Blue)

When the HI/LO beam switch is set on 'HI' this indicator will be lit.

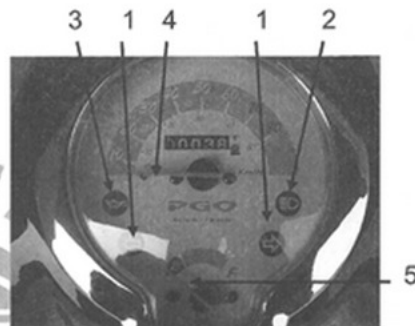
### 3. Oil Warning Indicator

Check/fill engine oil immediately.

### 4. Speedometer

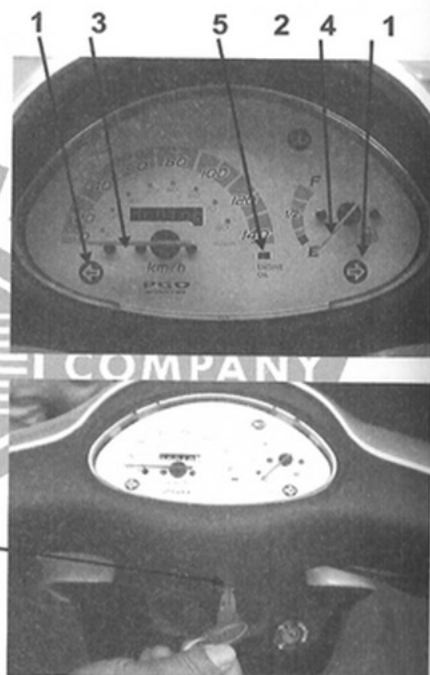
### 5. Fuel Gauge

The fuel gauge shows the approximate fuel supply available. At F (full) there are approximately 1.6 gallons (6.3 liters), including the reserve supply. When the meter pointer reaches the first point of the red band, refill the tank as soon as possible.



13

1. Hi/Lo Beam Switch  
Hi — The high beam is on  
Lo — The low beam is on
2. Turn Signal Switch  
Move to ← to signal a left turn, → to signal a right turn.  
Press to turn signal off.
3. Horn Button  
Press to sound horn.
4. Starter Button  
The starter button is below the headlight switch.  
Press to operate starter motor.



14

## Fuel Injection Engine Speedometer

### ① EMS selfish check indicator

1. EMS: Engine Management System, that means this vehicle must equipped with ECU (Electric Control Unit), injector and detect sensors.
2. When key ON, it will selfish test the lamp (ON) for about 5 second.
3. After the selfish test, whenever this lamp is ON again, that warns you there is defect of EMS, you have to find PGO dealer to inspect the EMS in detail.

### ② HIGH BEAM INDICATOR (BLUE)

When the HI/LO beam switch is set on 'HI', this indicator will light on

### ③ SPEED INDICATOR

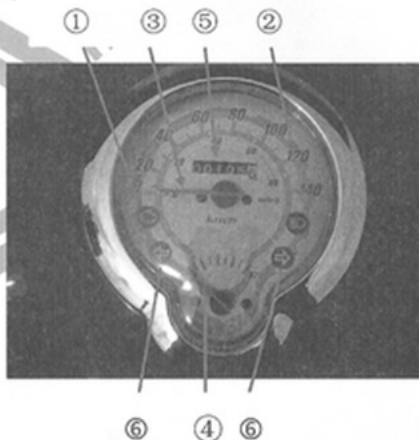
- ④ The fuel gauge shows the approximate fuel supply available. At F (full) there are 6.3 liters approximately, including the reserve supply. When the meter pointer reaches to the first point of the red band, refill the tank as soon as

possible.

- ⑤ ODO meters: when the hundred digital become RED, you have to replace the engine oil ASAP.

### ⑥ SIGNAL INDICATOR (GREEN)

When the blinker switch is shifted, this indicator will flash and tickling.



15

### 3. Handlebar Controls

#### 1. Hi/Lo Beam Switch

Hi – The high beam is on "≡▷"  
Lo – The low beam is on "≡▷"

#### 2. Turn Signal Switch

Move to ← to signal a left turn, → to signal a right turn.

Press to turn signal off.

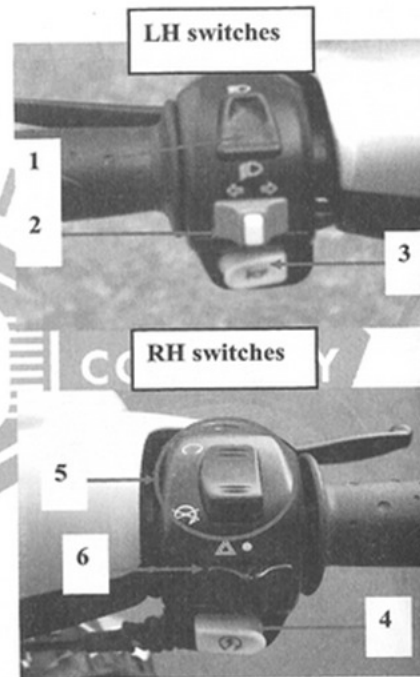
#### 3. Horn Button

Press to sound horn.

#### 4. Starter Button

The starter button is below the headlight switch.

Press to operate starter motor.



16

### 4. Steering Lock

To lock the steering, turn the handlebars all the way to the left and turn the key from "⊖" to "⊗". Remove the key.

### 5. SEATLOCK

Push the key in and turn counterclockwise to open the seat.



#### Note:

Do not turn the key to "⊗" while riding.  
You may lose control of the scooter.

17

### 6. Fuel Tank Cap

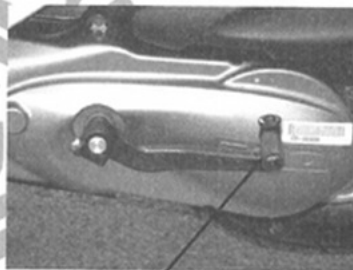
Insert the key into ignition switch. Push the key and turn counterclockwise to open the seat and expose the fuel tank cap.

The cap can now be opened.



### 7. Kick Starter Lever

Swing the lever outward. Kick the lever down slowly until the gear stops, then kick the lever down strongly to start the engine.



KICK STARTER

18

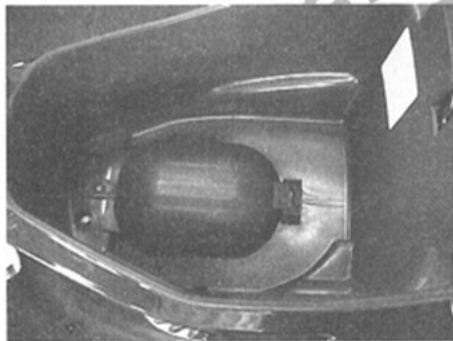
### 8. Luggage Compartment

The luggage compartment is under the seat.

Maximum load capacity: 11 lbs (5 kg)

#### NOTE:

1. The maximum load capacity is 11 lbs (5 kg).
2. If engine has been operating for a long time, the luggage compartment can become hot.
3. Be careful when carrying fragile goods in the luggage compartment.
4. The luggage compartment may become wet after rain or washing.
5. Please lock the luggage compartment when leaving the scooter.



19

## PRE-RIDING INSPECTION

Please do the inspection as following before riding:

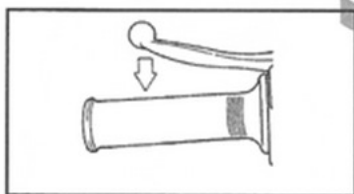
ITEM	PROCEDURE	PAGE
FRONT BRAKE	Check brake function, clearance, brake oil level. Check for leaking. If necessary, fill with FMVSS DOT3(4) r SAEJ 1703 brake oil.	34-35
REAR BRAKE	Check brake function and clearance, adjust if necessary.	35
THROTTLE GRIP	Check if it is smooth. Lubricate if necessary.	23
ENGINE OIL	Adjustments if necessary. Check the oil level/according to the request to refill oil.	23
TIRES	Check pressure and wear.	25
CONTROLLER/ GAUGE CABLE	Check for smooth operation. Lubricate if necessary.	--
BRAKE LEVER (HANDLE)	Check for smooth operation. Lubricate if necessary.	21
CENTERSTAND	Check for smooth operation. Lubricate if necessary.	--
ASSEMBLY/ FITTING	Check the body panels for proper fit. Adjust if necessary.	--
FUEL TANK	Check the fuel level. Refill if necessary.	18
HEADLAMP/ SIGNAL LIGHTS	Check for good operation.	--

20

### Brake

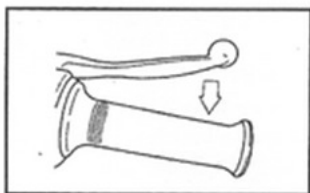
#### Adjustment:

1. Measure the 'play' of the rear brake lever before the brake starts to take hold.  
Free play should be 10-20mm.
2. Adjust the amount of free play by turning the adjusting nut at the brake lever.  
Make sure the cutout on the adjusting nut is seated on the brake arm pin after making final free play adjustment.
3. Apply the brake several times, then check that the rear wheel can turn freely when the brake lever is released.



#### Front Brake

The front brake will function when the right hand lever is squeezed.



**NOTE:** If the pre-riding inspection is not performed, severe personal injury or vehicle damage may result. Inspect your scooter, and perform any needed adjustments or repairs before each ride. The items listed above will only take a few minutes to check, and can save time and expense in the long run.

21

### Brake (please refer to page 34)

#### 1. Front/Rear Brake Levers

Inspect the free play of levers. Please check the brake at low speed. Adjust the free play if it is not correct.

#### CAUTION

If the brake lever feels soft when operating, the brake system may have a problem. Do not ride the scooter before the problem is resolved.

#### 2. Brake Fluid (Disk Brake)

Check the fluid level. Refill if necessary.  
Fluid spec: FMVSS DOT3 or SAE J1703

#### 3. Disk Brake Pad

Please refer to page 34. Please consult your dealer when the disk pads need to be replaced.

### Brake Fluid Leakage Inspection

Hold the brake lever for a few minutes to check if there are any fluid leaks from the hose connector or master cylinder.



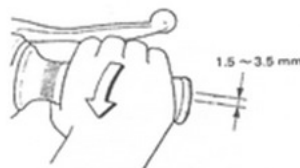
#### CAUTION

Go to your Genuine Scooters dealer immediately if you find the brake fluid is leaking. A leak could mean the braking system has a dangerous problem.

22

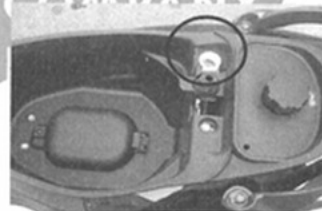
### Throttle Grip

- Turn the grip and check the clearance & operation.
- Make sure the twist grip automatically returns to the original position.
- Consult your Genuine Scooters dealer for adjusting advice, if necessary.



### Engine Oil

1. 4-stroke engine (125cc / 150cc)
  - Check engine oil level after engine has been running 2-3 minutes. Be sure scooter is on level ground.
  - Remove engine oil dipstick, wipe off excess oil. Replace dipstick, remove, and check oil level.
  - If oil level is below the low warning line, add oil.
2. 2-stroke engine (50cc)
  - Add 2-stroke engine oil into the oil tank

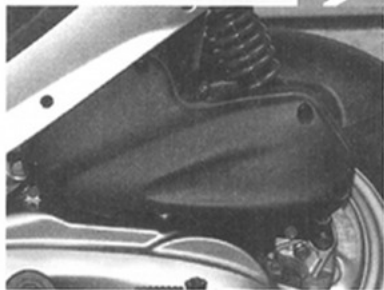


23

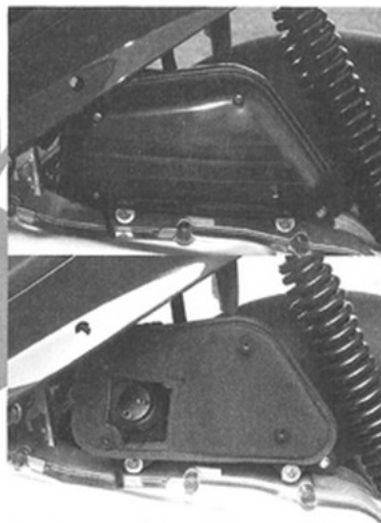
### Air Cleaner

The air filter will keep dust away from the engine and also protect it against wearing out. Please check and clean the filter periodically (ref: page 32)

1. 4-stroke engine (125cc / 150cc)  
Wet paper filter element



2. 2-stroke engine (50cc)  
Sponge filter element



24

### Tires

To ensure the best performance and extend the life of your scooter's tires, please pay attention to the following:

1. Tire Pressure

Be sure that tire pressure is in accordance with the standard pressure guidelines.

**NOTE:** The tire's inside temperature must be even to the outside temperature. If not, the pressure must be adjusted. Load, weight, and cruising speed should be taken into consideration before adjusting the pressure.

Standard tire pressure: Front: 22 psi  
Rear: 25 psi

Rear: 25 psi

2. Simple Check

Check tire appearance before riding. If tires are worn out significantly or damaged/punctured by debris, do not ride the scooter. Contact your dealer for repair.

3. Tread Depth

Replace tires if the tread depth is less than 0.8mm.



25

### Catalytic Converter (standard on California models)

The catalytic converter is designed to reduce the emissions produced by the motor. It is located inside the muffler.



#### Precautions:

1. Make sure to park your scooter away from flammable material or pedestrians to avoid contact with the hot muffler cover.
  2. Only use unleaded gasoline.
  3. Do not turn off the main switch when riding.
  4. Do not ride or idle on flammable surfaces.
1. Keep your engine in good working condition. An improperly tuned engine may cause abnormally high exhaust/catalytic converter temperatures.

26

#### Notation for Operation & Riding

- Please make sure you are familiar with all the operation and functions before riding. Please contact your Genuine Scooters dealer with any questions.
- Exhaust fumes are dangerous. Be sure you are in a well-ventilated area when the engine is started.
- Be sure to raise the side stand before riding.

#### Starting Engine

1. Turn the main switch to
2. With the throttle at rest, hold the brake lever and push the starter button or use the kick starter to start the engine.

**Caution:** Do not push the starter button for over 5 seconds at a time. Use the kick starter to start the engine if the start button is not working properly. Prolonged use of the starter without the engine starting may drain the battery.

27

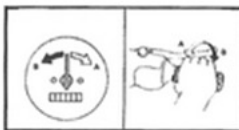
### Warming Up the Engine

To protect the engine, please warm up the engine 1-3 minutes before riding. Do not immediately accelerate when the engine is cold.

Note: Please read the section on "Engine Break-In" on page 29 before initial riding.



- Scooter riding (after warming up the engine)
  1. Hold the brake lever and push down the center or side stand.
  2. Adjust the rear view mirrors to allow a clear view of what is behind you.
  3. Test the headlight, tail light, and turn signals.
- Accelerating
  1. Use the throttle grip to control your speed. Rotating the throttle grip towards you will increase your speed. Rotating the throttle grip away from you will decrease your speed.



28

### \*\*\*VERY IMPORTANT\*\*\*

#### Engine Break-In

##### 0-620 mile

Proper engine break-in is critical to the longevity of the scooter's engine. Every part of the engine should be broken-in to obtain the proper clearances.

Please follow the proper break-in procedure:

1. 0-95 mile  
Avoid applying more than  $\frac{1}{2}$  throttle. Cool down the engine 5-10 minutes per hour of riding.  
Avoid cruising at a constant speed.
2. 95-310 mile  
Avoid applying more than  $\frac{1}{2}$  throttle for extended periods of time.  
Note: Change gear (2 stroke & 4 stroke engine) & engine (4 stroke engine) oil after 200 mile.
3. 310-620 mile  
Avoid applying more than  $\frac{3}{4}$  throttle.
4. Over 620 mile  
Avoid applying full throttle for extended periods of time.

Note: Please contact your Genuine Scooter dealer if any problems take place during the break-in process.

29

**Periodic Maintenance Table—please execute the recommended maintenance accordingly.**

Item	Checking Content	Months/Distance (mile)							
		1 or 200mile	3 or 1800mile	6 or 3600mile	9 or 5400mile	12 or 7200mile	15 or 9000mile	18 or 10800mile	
Engine Oil	Add	○	According to oil warning light						
Engine Oil*(4T)	Replace (800cc, total 900cc)	○	Replace every 1800mile						
Oil Filter(4T)	Replace	○	Clean every 3600mile or replace if necessary						
Coarse Oil Filter*(on oil drain bolt)(4T)	Clean, replace if necessary	○	Clean every 3600mile or replace if necessary						
Air Cleaner	Clean, replace if necessary		○	○	○	○	○	○	
Air Filter	Clean, replace if necessary		○	○	○	○	○	○	
Gear Oil*	Replace (90cc, total 110cc)	○	○	○	○	○	○	○	
Disk & Drum Brake	Check for wear, replace if necessary		○	○	○	○	○	○	
Clutch Shoes*	Check, replace if necessary		○	○	○	○	○	○	
Rear Brake Arm	Check, adjust if necessary			○		○		○	
Tires	Check for wear, replace if necessary		○	○	○	○	○	○	
Wheel Bearing*	Tighten if loose		○	○	○	○	○	○	
Front Fork*	Check for leaks/functionality	○	○	○	○	○	○	○	
Steering Head Bearing	Check for play. Adjust if necessary			○		○		○	

30

\* Recommended to have service performed by dealer.

**Periodic Maintenance Table—please execute the recommended maintenance accordingly.**

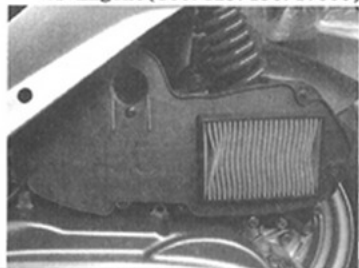
Item	Checking Content	Months/Distance (mile)							
		1 or 200mile	3 or 1800mile	6 or 3600mile	9 or 5400mile	12 or 7200mile	15 or 9000mile	18 or 10800mile	
Rear Absorber Shock	Check for leaks/functionality	○	○		○		○		
Main/Side Stand	Check functionality, replace if necessary	○	○	○	○	○	○	○	
Nuts, Bolts, Fasteners	Tighten if required	○	○	○	○	○	○	○	
Battery	Make sure voltage stays over 12.8V. Recharge the battery and clean poles if required.			○	○	○	○	○	
Valve Gap*(4T)	Check and adjust when the engine is cool (0.08mm)	Adjust when necessary							
Carbon Cleaning*(2T)	Clean carbon build-up when engine output is reduced			○		○		○	
Spark Plug*	Clean or replace when required			○		○		○	
V Belt*	Check for wear. Replace when necessary		○		○		○		
Fuel Feeding System*	Check for cracks or blockage	○	○	○	○	○	○	○	
Engine Idle Speed*	2T engine: 1900±100 rpm 4T engine: 1700±100 rpm	○	○	○	○	○	○	○	
Carburetor Idle A/F Adjustment*	Check and adjust, referring to CO/HC %	○	○	○	○	○	○	○	
Fuel feeding system*(170cc)	Crack and blockage check. Replace it if necessary.								
Fuel feeding system *(170cc)	Inspect hose, clamp, and replace the filter per 10,800mile								
EMS function check*(170cc)	Inspect EMS function, and clear the defect memory if necessary								

31

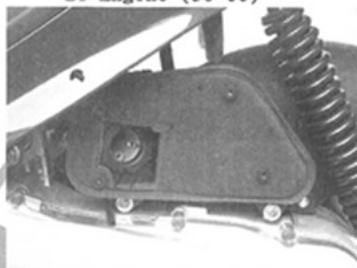
\* Recommended to have service performed by dealer.

### The Air Cleaner

4T Engine(100/125/150/170cc)



2T Engine (50 cc)



If the air filter element is clogged, it will reduce engine performance and cause abnormal fuel consumption.

#### Changing the air filter element:

1. Take off the air filter cover.
2. Remove the air filter element.
3. Clean air filter element and dry using compressed air. Spray with approximately 5 grams motor oil (SAE10W30), or replace filter element if necessary.
4. Fit the new or clean air filter element and replace the cover carefully to make sure there are no leaks.

**Note:** Do not start the engine before the air cleaner is assembled, or the piston and main case could be damaged.

32

### The Spark Plug

The spark plug is an important part of the engine and is easily checked. The ideal color of the electrode should be light brown. If the spark plug electrode is a different color, please ask your dealer for assistance.

- ☒ Standard spark plug: 125cc / 150 cc engine C7HSA (NGK)  
170cc engine C7RHSA(NGK)  
50cc engine BP7HS (NGK)

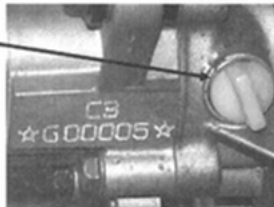
- ☒ Spark plug gap: 0.6-0.7mm

When checking the spark plug, clean the surface of the washer and threads before installing.

- ☒ Torque: 7.2 ft/lb (1.2 kg/m)

### Changing Gear Oil

- ☒ Change the gear oil after the first 200mile. After the initial gear oil change, it is recommended to change the gear oil every 3600mile.
- ☒ Gear oil volume: 90cc (SAE 140)

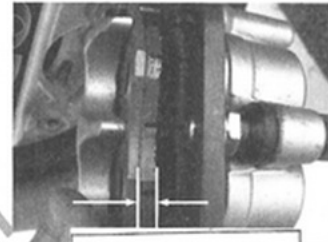


33

### Front Brake Check

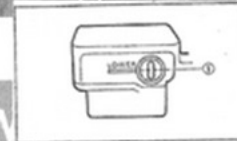
Remove the inspection hold cover from the brake caliper to view the brake pad wear indicators. If the indicators almost reach the brake disk, the brake pads should be changed.

**Note:** Be sure to re-install the inspection hole cover. If the cover is not re-installed, water may enter through the inspection hole and compromise brake performance.



### Brake Fluid Check

Insufficient brake fluid may introduce air into the brake system and will compromise brake performance. Be sure to check the brake fluid level regularly and refill when necessary.



1. Check when the handlebars are in a level position.
2. Refill with the correct brake fluid. Using incorrect brake fluid can damage brake seals, causing leaks. Standard brake fluid: FMVSS DOT3.
3. Refill with the same kind of brake fluid. Mixing with different brake fluid may cause a bad chemical reaction and may damage the brake system.
4. Refill with fluid from a new, unopened bottle.
5. Brake fluid can damage painted parts. Be careful when filling and clean spills immediately.

### Front Fork Check

#### 1. Visual check

- Visually inspect forks for scratches or other damage and leaks.
- If damage or leaks are found, do not ride the scooter and consult with your dealer for service.

#### 2. Function check

- Park the scooter on level ground.
- Hold the handlebars and apply the front brake.
- Push down on the handlebars several times, compressing the front fork.
- If the front fork does not compress/rebound smoothly, consult with your dealer for service.

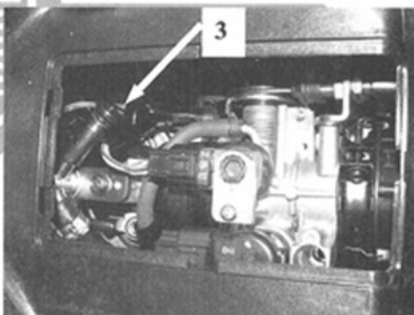
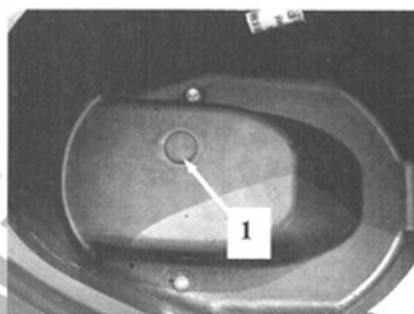


2.FUNCTION CHECK

### Fuel draining device (fuel injection engine only):

If the vehicle is stored continually more than 1 month, the fuel inside the hose might be bad for starting the engine, then you have to:

1. Withdraw the rubber cap inside the luggage.
2. Turn ON the main key. (Don't start the engine now!)
3. Press the drain valve by finger to drain the fuel. (Not necessary to dismantle the luggage)
4. After draining the bad fuel inside the hose, then you can start the engine.



36

### EMS quick diagnostic (only the well trained dealer can do it)

1. prepare the quick diagnostic tool, plug into the seat below the seat.
2. If the EMS led (on dashboard) doesn't illuminate, that means EMS is well working.
3. If there is any EMS problem, the EMS led will flash to remind you the condition, we suggest you to find a PGO dealer to make further inspection for you.



37

**EMS defect code reference table:**

DEFECT PART	EMS LED CODE
Throttle valve sensor defect	0 LONG 6 SHORT
Intake manifold pressure sensor defect	0 LONG 9 SHORT
Oil temperature sensor defect	1 LONG 1 SHORT
Oxygen sensor defect	1 LONG 7 SHORT
Injector defect	3 LONG 3 SHORT
Ignition coil defect	3 LONG 7 SHORT
Fuel pump or circuit defect	4 LONG 1 SHORT
Oxygen circuit defect	4 LONG 5 SHORT
ISC defect	4 LONG 9 SHORT
Crankshaft speed sensor or circuit defect	6 LONG 6 SHORT
ECU defect	ALWAYS ILLUMINATE
System well	DON'T ILLUMINATE

38

**Fuse Replacement**

The fuse is located beside the battery. If the fuse is burned out, there will be no power when the main switch is turned on.

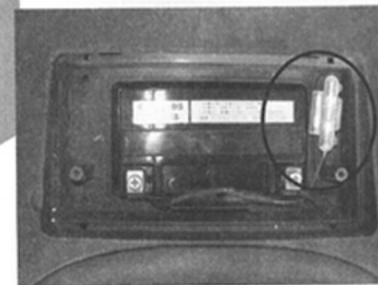
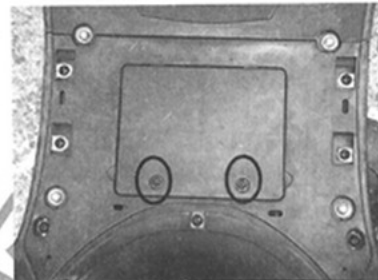
1. Remove the battery cover by loosening the two screws.
2. If the fuse is burned out, turn off the main switch, replace with the correct fuse, then turn on the main switch and verify power has been restored.

**Note:** Do not use a higher amp fuse than the standard one. A different fuse may damage the electrical system and may cause fire.

**Battery**

The battery is a maintenance-free battery. It is not necessary to check or refill the liquid. If the battery is leaking, contact your Genuine Scooter dealer immediately.

**Note:** Do not try to take off the rubber seal even when charging the battery. Doing this will damage your battery.



39

### SPECIFICATIONS

	Buddy 50	Buddy 125	Buddy 150	Buddy 170
Dimension				
Overall length	1710mm	1710mm	1710mm	1780mm
Overall width	645mm	645mm	645mm	645mm
Overall height	1060mm	1060mm	1060mm	1090mm
Wheelbase	1210mm	1210mm	1210mm	1210mm
Dry Weight	100kg	101kg	101kg	107kg
Engine				
Type	2 stroke	4 stroke	4 stroke	4 stroke
Cooling	forced air cooling	forced air cooling	forced air cooled	forced air cooled
Cylinder array	single	single	single	single
Displacement	49cc	124.9 cc	149.5 cc	168.9 cc
Start system	electric and kick	electric and kick	electric and kick	electric and kick
Lubrication system	separated pump	compress spray	compress spray	compress spray
Lubricant	SAE30 (FC class)	SAE15W40	SAE15W40	SAE15W40
Capacity	1.0 L	0.9 L	0.9 L	0.9 L
Spark Plug	BP7HS (NGK)	C7HSA (NGK)	C7HSA (NGK)	C7RHSA (NGK)
Clutch type	Dry Type CVT	Dry Type CVT	Dry Type CVT	Dry Type CVT
40 Gear shift type	Automatic (V Belt)	Automatic (V Belt)	Automatic (V Belt)	Automatic (V Belt)

### SPECIFICATIONS

	Buddy 50	Buddy 125	Buddy 150	Buddy 170
Gear Oil				
Type	SAE 140	SAE 140	SAE 140	SAE 140
Min. volume	90 cc	90 cc	90 cc	90 cc
Total volume	110 cc	110 cc	110 cc	110 cc
Air Cleaner	Sponge	Dry Filter	Dry Filter	Dry Filter
Fuel				
Gasoline	Unleaded only	Unleaded only	Unleaded only	Unleaded only
Capacity	6.3 L	6.3 L	6.3 L	5.7 L
Tire				
Front	90/90-10	100/90-10	100/90-10	100/90-10
Rear	90/90-10	100/90-10	100/90-10	100/90-10
Electric System				
Ignition system	CDI	CDI	CDI	EMS
Generator system	AC Flywheel Magnet	AC Flywheel Magnet	AC Flywheel Magnet	AC Flywheel Magnet
Battery Type	YTX4L-BS	YTX7L-BS	YTX7L-BS	YTX7L-BS
Capacity	12V 3AH	12V 6AH	12V 6AH	12V 6AH

### SPECIFICATIONS

	Buddy 50	Buddy 125	Buddy 150	Buddy 170
Bulb Volt / Watt * QTY				
Headlight (Hi/Lo)	12V 35W/30W *1	12V 35W/30W *1	12V 35W/35W *1	12V 35W/35W *1
Rear/Stop Lamps	12V 5W/21W *1	12V 5W/21W *1	12V 5W/21W*1	12V 5W/2.65W*1
Turn Signal Light (Front/Rear)	12V 10W *4	12V 10W *4	12V 10W *4	12V 21W/10W *4
Speedometer	12V 1.7W *2	12V 1.7W *2	12V 1.7W *2	12V 1.7W *2
High Beam indicator	12 V 1.7W *1	12 V 1.7W *1	12V 1.7W *1	12V 1.7W *1
Signal indicator	12V 1.7W *2	12V 1.7W *2	12W 1.7W *2	12W 1.7W *2
Oil Warning indicator	12V 1.7W *1	N/A	N/A	N/A

42

### Periodic Maintenance Record

Scheduled	Actual	Date	Dealer Sig.	Scheduled	Actual	Date	Dealer Sig.
200 mile				16200 mile			
1800 mile				18000 mile			
3600 mile				19800 mile			
5400 mile				21600 mile			
7200 mile				23400 mile			
9000 mile				25200 mile <sup>®</sup>			
10800 mile				27000 mile			
12600 mile				28800 mile			
14400 mile				30600 mile			

43

**PART NO. C1352170000**

Genuine Scooter Company  
5400 N Damen Avenue  
Chicago IL 60625

**Reporting Safety Defects**

If you believe your vehicle has a defect that could cause an accident, or could cause injury or death, you should immediately inform the National Highway Safety Administration (NHTSA) in addition to notifying Genuine Scooter Company.

If NHTSA receives similar complaints, it may open an investigation, and if it finds that a safety defect exists in a group of vehicles, it may order a recall and remedy campaign. However, NHTSA cannot become involved in any individual problems between you, your dealer, or Genuine Scooter Company.

To contact NHTSA you may either call Auto Safety Hotline toll-free at 1-800-424-9393 (366-0123 in Washington DC area) or write to:

NHTSA  
U.S. DEPARTMENT OF TRANSPORTATION  
400 7th Street SW, (NSA-11)  
Washington, DC 20590

**44** You can also obtain other information about motor vehicle safety from the Hotline.



Office: 5400 N Damen Ave  
Chicago IL 60625  
Tel: 773-271-8514  
Fax: 773-271-8518  
email: [info@genuinescooters.com](mailto:info@genuinescooters.com)

Part No: P6352085000D

[www.genuinescooters.com](http://www.genuinescooters.com)